

Customer :

customer

Customer part :

customer part

Comment :

Comment

S1=2.51

S2=3.78

Tmax=462

Tp S2=501.0

PI=0.4

HI=124

Sample =1667.60

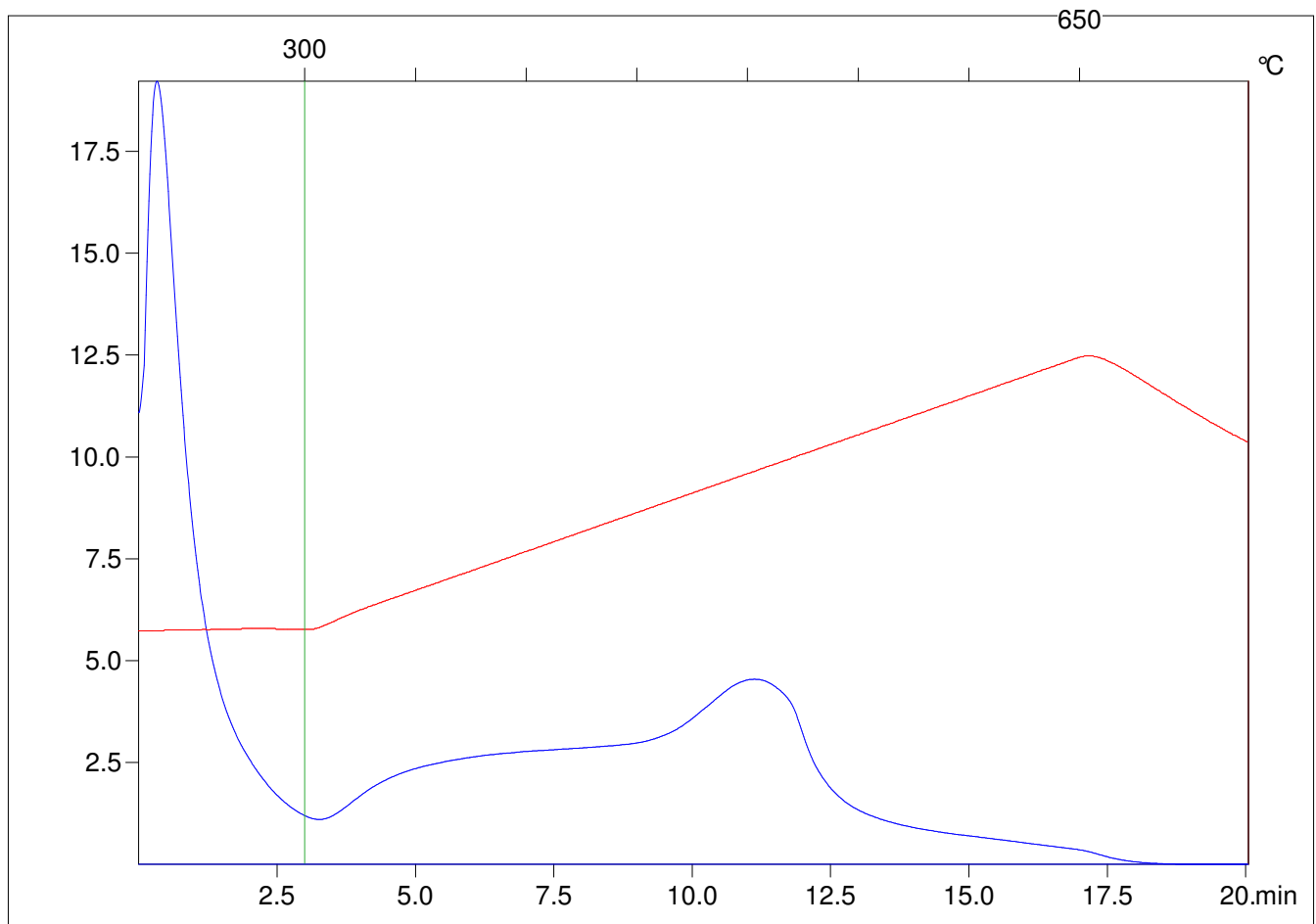
Method =Bulk Rock

Cycle=Basic

KFID(10*9)=1444

Qty =70.7

TOC=3.04



C:\VINC\PK1_1792\PK005.R00 : FID pyrolysis graphic

State

Pyro Status

Oxi Status